



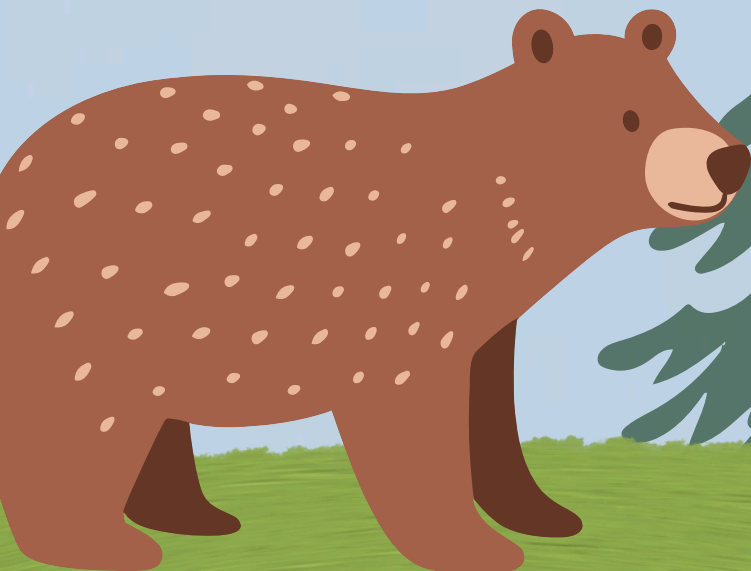
SLIPPERY ROCK AREA

PARKS
& RECREATION

SUMMER ADVENTURE

2026

CAMP



ABOUT CAMP

WHAT IS OFFERED?

Summer Adventure Camp is a childcare program that offers weekly thematic activities to the children of our local community. Each day, your child will be engaged in a variety of outdoor games, crafts, and activities.

WHAT IS THE COST?

The cost of Adventure Camp is \$105 a week per camp.

WHEN IS IT?

Adventure Camp operates from 9:00- 12:00 PM. The program will run weekly from June 15 to August 14.

Morning drop off hours run from 7:30- 8:45. The drop off location is the Recreational Building next to the Park Office.

For families who need additional care, we offer an Afternoon Extended Day program allowing campers to continue fun daily activities and adventures.

WHERE DOES CAMP TAKE PLACE?

The program is held at the Slippery Rock Area Park in the upper and lower pavilion areas.

WHO CAN ATTEND?

Adventure Camp welcomes children ages 4 to 10. Our programs are designed to be hands-on and age-appropriate to ensure that every camper has fun while learning in a safe and exciting environment.

WHAT IS EXTENDED DAY CARE?

Our extended day program is offered from 12:00-5:00 and allows children to continue the fun throughout the afternoon. Here children will be engaged in both indoor and outdoor activities such as field games, STEM/Science experiments, crafts, and water days.

AFTERNOON EXTENDED DAY COST:

- \$25.00 First Child
- \$22.00 Additional Child Rate

WHAT SHOULD MY CHILD BRING?

Children are asked to bring a water bottle with them every day. If your child is staying for the extended day, they will need to pack a daily lunch.

*A snack will be provided for children in both the morning and afternoon.





MORNING DROP OFF ROUTINE

From 7:30-8:45, campers will arrive at the Recreation Building, where they will sign in, put their lunches in the refrigerator if they are staying for the afternoon, fill up their water bottles, use the restroom, and enjoy a quick snack. At 8:45, everyone will walk together to the pavilion to begin the day's activities.

AFTERNOON EXTENDED DAY:

Campers will have lunch from 12:00 to 1:00 p.m., followed by field games from 1:00 to 2:00 p.m. From 2:00 to 3:30 p.m., there will be a snack break and indoor activities along with bathroom breaks and water refills. Finally, from 3:30 to 5:00 p.m., campers will enjoy field games and free play.

AFTERNOON ACTIVITIES SCHEDULE

- 12:00-1:00 Lunch in Pavilion
- 1:00-2:00 Field Games
- 2:00-3:00 Snack/Indoor Activities
- 3:00-4:00 Special Daily Activity
- 4:00-5:00 Free Play at Playground

SPECIAL DAY ACTIVITIES:

- Monday: Arts & Crafts
- Tuesday: Science/STEM
- Wednesday: Park/Community Projects
- Thursday: Ice Cream
- Friday: Water Day

PLEASE ENSURE YOUR CHILD BRINGS A PACKED LUNCH AND A WATER BOTTLE EACH DAY. A LIGHT SNACK WILL BE PROVIDED IN BOTH THE MORNING AND AFTERNOON.

REGISTRATIONS & SCHEDULES

WHEN ARE REGISTRATIONS DUE?

Due to the limited number of spots in our weekly camps, we strongly encourage you to register your child for all of the camps they will be attending over the summer as early as possible. Additional camps can be added throughout the summer, space provided, but we require the registration to be completed and submitted **no later than the Monday prior to the week of camp, including their extended day care needs for that week. Afternoon Extended Care schedules must be completed upon registration for each camp.** Additional Extended Care days can be added as needed throughout the week, but they must be submitted **in writing to the office** either in person or thru email to **playsafe@srpark.org**. The additional day cost is \$30.

*There is a \$20 late fee for all schedules and payments received later than Monday, the week prior to the week of camp.

HOW DO I SUBMIT REGISTRATIONS AND SCHEDULES?

- **Email:** Submit a completed registration/schedule form to **playsafe@srpark.org**. The email must contain the child's name and the specific camps you are registering for as well as the pick up time for any extended day care needs.
- **In Person:** Schedules can be dropped off to the office during our regular business hours: Monday-Friday 7:30-3:30.
- **Office Drop Box:** Schedules may be dropped off in an envelope with the attached registration/schedule and payment. The child's name must be on the front of the envelop.

Please do not give registrations/schedules or payment to camp staff.

Deliver to office only.

Payments must be submitted with registrations/schedules.

PAYMENT

HOW DO I PAY?

Both Adventure Camp and the Extended Day Care programs are prepaid programs. If registering for multiple summer camps all at once at the beginning of the summer, you may choose to pay all at once. Otherwise, you will be invoiced and charged for each registered camp/extended day needs weekly. Invoices will be created and payments will be due the Monday prior to the week of camp.

If registering for camps as needed throughout the summer, your payments will be due the Monday prior to the week of camp with the submission of your camp/extended care schedule.

*There is a \$20 late fee for all schedules and payments received later than Monday, the week prior to the week of camp.

FORMS OF PAYMENT

- **Credit/Debit Card**- Cards are accepted over the phone or in person. We also have the option for families to keep a card on file. There will be an additional processing fee.
- **Check**- Checks should be made out to **SLIPPERY ROCK AREA PARKS AND REC.** All checks should have their **memo line filled out with your child's name and the specific Summer Adventure Camp.** If mailing checks, make sure to send early enough that we receive the payments on time.
- **Cash**- Cash is accepted at the park. However, as a nonprofit organization we do not carry change in the office, so you will need the exact amount. If you do not have exact change, the additional amount will be applied to your account as credit, which can be used for future payment.

***Please submit all cash and check to the Park Office.**

Do not give payments to camp staff!

If dropping off payment after 3:30, you may utilize our drop off box located on the outside of the front door.

REFUNDS

There are no refunds for our Adventure Camps or Extended Day programs unless the program is cancelled by the Park for reasons outside of our control. We have limited spaces for each weekly camp. We also staff based on the anticipated number of children scheduled each week to stay within state regulations.

If a situation presents itself, and your child is not able to come to camp or stay for their scheduled extended day, no refunds will be issued.

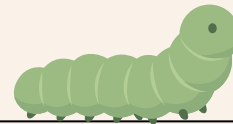
All payments are final.



ADVENTURE

BIG CAMPERS

Ages 7-10



<p>JUNE 15 - 19 STEM</p> <p>Chemical Reactions Mechanics Rube Goldberg Tesselations</p>	<p>JUNE 22 - 26 FANTASY</p> <p>Wizards Candyland Pokemon Super Heros</p>	<p>JUNE 29 - JULY 2 NATURE</p> <p>Eco-exploration Plant Power Nature Made Art Camping</p>
<p>JULY 6 - 10 MINECRAFT</p> <p>Potions Building Ender Dragon Pixel Art</p>	<p>JULY 13 - 17 ARTS & CRAFTS</p> <p>Shrinky Dinks Paper Mache Bracelets Tie-Dye</p>	<p>JULY 20 - 24 ANIMALS</p> <p>Life on the Farm Safari Dinos Desert</p>
<p>JULY 27 - 31 TIME TRAVEL</p> <p>Mayans Ancient Greece Ancient Egypt Renaissance</p>	<p>AUGUST 2 - 7 BEACH/OCEAN</p> <p>Ocean Layers Tectonic Plates Animals Water Games</p>	<p>AUGUST 10 - 14 PIRATE/TREASURE</p> <p>Read Maps Treasure Hunt Games Craft a Boat</p>

THEMES

LITTLE CAMPERS

4-6 Years Old

JUNE 15 - 19
SPACE

Stars
Planets
Galaxy Goo
Space Food

JUNE 22 - 26
DINOSAURS

Fossils
Identify Dinos
Dino Traits
Swim/Fly/Walk

JUNE 29 - JULY 2
RED, WHITE, & BLUE

USA History
Patriotic Crafts
USA Stories
Colors

JULY 6 - 10
OCEAN

Animals
Oceans of the World
Sharks
Water Activities

JULY 13 - 17
CAMPING

Read in a Tent
Cook S'mores
Read by Flashlight
Forest

JULY 20 - 24
FARM

Life on the Farm
Animals
What We Get From
Farms



JULY 27 - 31
NATURE

Bird Feeders
Plant Flowers
Paint Stones
Recycled Art



CONTACT US!



724-794-8180



320 N Main St, Slippery Rock, PA



Slipperyrockgeneral@gmail.com



www.slipperyrockpark-rec.org

